



SMART[®] BOARD COMPOSITE FENCING

INSTALLATION GUIDE



Freephone Helpline: 0800 8496339



CONTENTS

Introduction	3
Main Components	4
Handling & Storage	5
Recommended Tools	5
Installation Guide.....	7 - 11
Retro Fitting Guide.....	12
Technical Data Sheet.....	14
Warranty.....	15



NEW

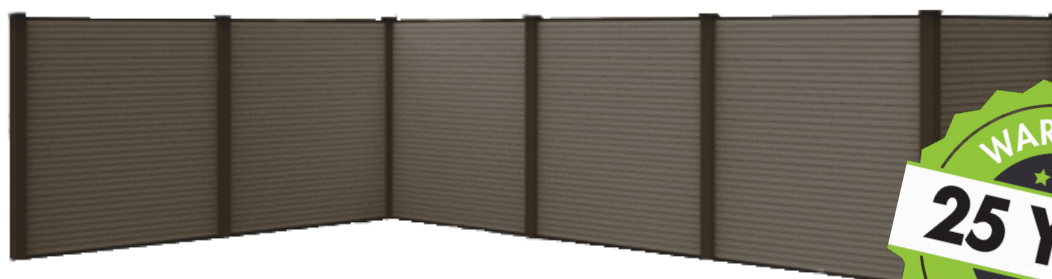
TO THE SMARTBOARD RANGE...

Introducing SmartBoard Composite Fencing, featuring a specially designed durable brushed surface to withstand all weathers. From harsh winds, winter snow to blazing sun, panels weather subtly and gracefully!

Combining the beauty of wood with the resilience of plastic, SmartBoard Composite Fencing is FSC 100% Certified and consists of 90% recycled materials (plastic and wood waste). These are combined with a small amount of additives and processed into beautiful monochrome fencing boards, manufactured as a versatile reversible dual pattern.

Available in a charcoal colour that works beautifully with all the colour options within the wider SmartBoard decking range.

**SMART
BOARD**
COMPOSITE FENCING



1.

MAIN COMPONENTS

	<p>Aluminium Top Rail 19.8 x 20 x 1800mm</p>		<p>Steel Inner Post 50 x 50 x 2400mm</p>
	<p>Composite Fence Board 20 x 145 x 1800mm</p>		<p>Composite Post Sleeve 100 x 100 x 1900mm</p>
	<p>Aluminium Bottom Rail 19.8 x 34 x 1800mm</p>		<p>Composite Post Cap with 2 Locating Screws 100 x 100mm</p>
	<p>Bottom Rail Fixing Clips 16 x 28 x 30</p>		<p>Composite Post Sleeve Spare Groove Inserts 16 x 29 x 1900mm</p>
			<p>Concrete Post Adaptor Sleeve 49-54 x 32 x 1900mm</p>

2.

HANDLING & STORAGE

It is best to store SmartBoard Composite Fencing inside/undercover in shade, and protected from weather until ready to install.

On site, ensure boards are stored flat, off the ground and with sufficient support (every 600mm).

Fencing boards should be picked up and placed down with care to avoid damage. Placing, rather than sliding boards on top of one another is preferable when moving boards about on site. Sliding boards over one another may cause marking.

Fencing boards should be carried in the middle and on their edge for best support when moving.

The surface of the fencing boards should be kept free of construction debris and material to prevent damage to the boards.

RECOMMENDED TOOLS

- Safety Glasses/ Relevant PPE
- Stringline
- Tape Measure
- Pencil
- Spirit Level
- Electric Drill/Screwdriver
- Hand Saw or Mitre Saw
- Appropriate blades for cutting composite material
- Hole digging equipment
- Laser level (not essential but useful!)





Freephone helpline:

0800 849 6339

If you need help with installation or have any questions about SmartBoard products, simply call our friendly team.



3.1

INSTALLATION GUIDE



Read all of this manual before you begin laying the boards!

Following the installation and maintenance instructions below will determine the longevity and warranty of your product. This notice provides general installation cases.

1. MARK OUT FENCE LINE AND DIG THE HOLES

Clear the area of any unwanted material and debris. Identify the line of the fence is to take using a stringline. Ensure that the posts are consistently placed on your side of the property boundary. (As shown in the figure 1)

2. DIG THE HOLES MAKING SURE THAT THEY ARE AT THE CORRECT DISTANCE APART FOR THE PANELS.

For optimal hole dimensions, we recommend a width of 300 x 300mm and a depth of 600mm. If you encounter solid obstacles like rocks during excavation, employ a pry bar to remove them. When encountering tree roots, utilize a narrow saw to remove them. Compact the hole's base until it becomes stable. (As shown in the figure 1)

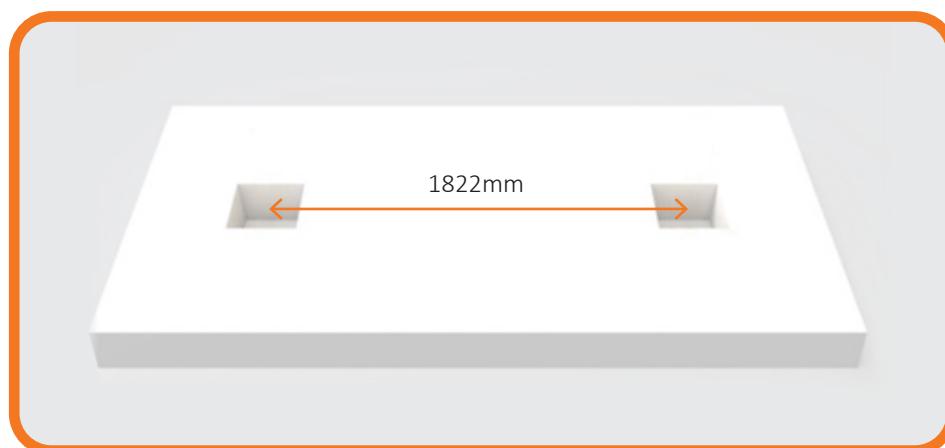


Figure 1

3.2

INSTALLATION GUIDE

3. SETTING THE STEEL POSTS

After completing the hole, position the square metal post centrally within it, ensure that it is buried at least 600mm below the ground. Please ensure that the distance between the metal posts is 1822mm as shown in figure 2. The easiest way to do this is to cut 2 pieces of timber to 1822mm to ensure both top and bottom of the post are the correct distance apart. Use a spirit level to confirm that the post supports are perfectly plumb and aligned with the fencing's direction. A second pair of hands will make the job easier.

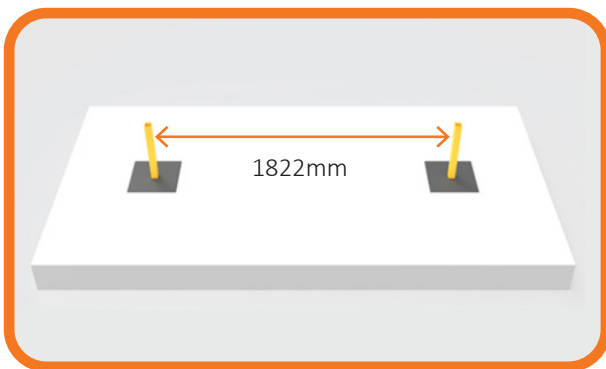


Figure 2

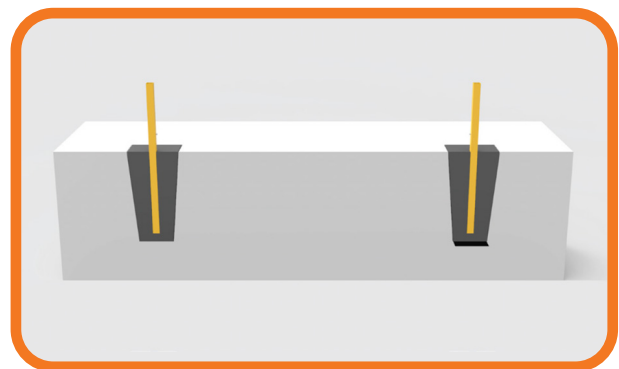


Figure 3

4. SECURE THE STEEL POST WITHIN THE HOLE - VERIFYING THE CORRECT SPACING OF THE POST

Fill the hole with concrete to anchor it, as depicted in Figure 3. Check that the post is still plumb using a spirit level, the post may require some temporary bracing at this point. Allow the concrete to set for a minimum of 24 hours.

Make sure the surface of the concrete is angled down away from the post to allow water to drain away.

3.3

INSTALLATION GUIDE

5. INSTALL PANELS OR MORE POSTS

At this point once you have 3 steel posts set in place you can either install the components for the first fence panel or carry on installing the rest of the metal posts along the fence line.

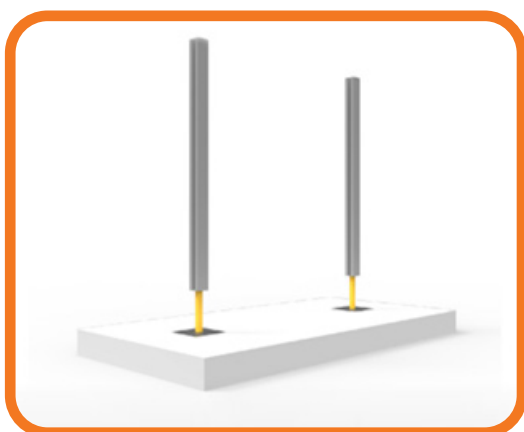
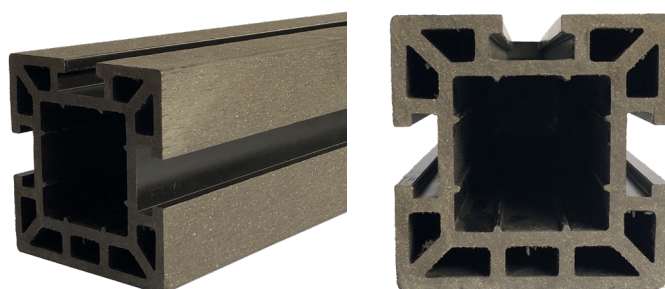


Figure 4



6. INSERTING THE COMPOSITE POST SLEEVE

Slide the composite post sleeve over the metal post. Please note - The composite fence post is to sit on-top of the concrete. Only the steel insert is concreted into the ground. Whilst the concrete is setting, ensure the post does not rest on the surface, use a temporary batten if necessary.



Figure 5

7. SECURE THE POSTS

After positioning the post sleeves, screw them securely into the steel post, as shown in Figure 5.

3.4

INSTALLATION GUIDE

8. INSERTING THE PANEL COMPONENTS

Slide the bottom rail clips into the grooves on the opposing fence posts, secure them to the posts at the required height ensuring that they are level with each other. The bottom rail can now be slid down the post grooves as depicted in Figure 6.



Figure 6



9. ADDING THE FENCE BOARD

With the fence posts and bottom rail in position, you can now begin adding the fence boards, as shown in Figure 7. Slide the initial fence board down the post grooves into the bottom rail. Once securely in place, slide the next board down the post grooves, slotting it in to the previous fence board.



Figure 7

10. REACH DESIRED FENCE HEIGHT

Continue inserting the remaining boards until you reach the desired fence height, as illustrated in Figure 7.

For a standard 1.8 metre (6ft) fence height, use 12 boards.

3.5

INSTALLATION GUIDE

11. COMPLETE THE FENCE PANEL

Once all the boards are in place, you can complete the fence panel by following these steps:

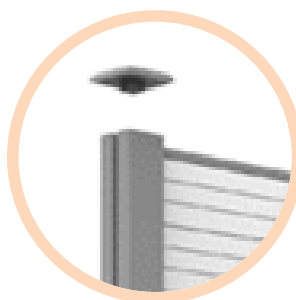
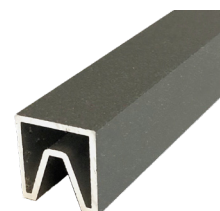
- Add capping rail clips to both sides of the capping rail
- Insert the capping rail clips, along with the capping rail, into the grooves of the opposing posts.
- Ensure that the capping rail is inserted with its groove facing downward to secure the final board, as shown in Figure 8. To achieve a fully polished appearance, slide the post insert into the spare groove in the post as needed.
- Place the fence post caps onto the top of the fence posts and secure into place, as in Figure 9.



Figure 8



Figure 9



12. REPEAT STEPS 5 - 11

Repeat steps 5 - 11 until the entire fence is fully assembled.

4.

RETRO FITTING GUIDE

RETRO FITTING INTO SLOTTED CONCRETE POSTS

1. Using our coated aluminium post channel sleeve, cut to desired length and secure the sleeves into the channel in the concrete posts using an adhesive suitable for external use.
2. Once they are in place insert the coated aluminium bottom rail followed by the composite fence boards and finally the coated aluminium top rail.

NB. Use of concrete slotted posts and concrete gravel boards allows for the composite fencing panels to be used where installation of a fence on sloping ground is required



5.

TECHNICAL DATA SHEET

SmartBoard Fencing

PRODUCT DETAILS		Article Number	SF04201451734			
		EAN Code	N/A			
		Composition	60% Natural Wood Powder			
		Surface Finish	Sanded			
		Profile	Two-sided, 1-grooved face and 1-smooth face			
		Colours	Ash, Brown, Charcoal			
		Dimensions (Thickness x Width x Length)	Fence Board:	20 mm	145 mm	1800 mm
			End Rail:	19.80 mm	20 mm	1800 mm
			Start Rail:	19.80 mm	34 mm	1800 mm
			Stopper:	3 mm	2.80 mm	
			Post:	100 mm	100 mm	1900 mm
			Steel Inner Beam:	50 mm	50 mm	2400 mm
			Post Cap:	102 mm	102 mm	
			Post Sleeve:	16 mm	29 mm	1900 mm
			Aluminium Sleeve:	53.60 mm	49 mm	32 mm

TECHNICAL PROPERTIES		Density	Immersion method in void-free form: 1.35g/cm ³		
		Bending Properties	Test Span : 400 mm	3.58 KN Max force	
			Bending Strength	38.81 Mpa	
			Flexural modulus	3032.30 Mpa	
		Tensile Strength	Fm > 270 Mpa		
		Coefficient of Thermal Expansion	$\Delta L < 23.3 \times 10^{-6} \cdot ^\circ C^{-1}$		
		Wind Resistance	The fencing shall resist a max. wind pressure of 520 Pa (as a 10 on Beaufort scale 10 wind level).	There was no failure nor any evidence disengagement of any component nor visible cracks in any component.	
		Fire behaviour	Class: Cfl-s2		

LOGISTICAL INFORMATION		On pallet L= 1800 mm	Quantity	Working (m ²)	Net weight (Kg)
		Composite board 145 mm	144 pcs	38 m ²	680 Kg

DETAILS DESCRIPTION		Our Composite Fencing, a B2B-friendly solution that combines easy installation, low maintenance, incredible durability, and stain resistance, all while remaining budget-friendly, redefining outdoor design for commercial and private uses.
---------------------	--	---

COLOUR CHANGE		Capped composite materials can experience colour variation over time due to factors like UV exposure, weathering, staining, and maintenance practices, which can result in fading, discolouration, and surface changes.
---------------	--	---

NORMS	Technical Characteristics	Norm
	• Density	ISO 1183-1
	• Flexural properties (Bending Strength) • Flexural properties (Modulus of elasticity) • Flexural properties (Maximum load (mean and min.)) • Flexural properties (Deflection at 500 N (mean and max.))	EN 15534-4:2014
	• Tensile strength	EN 310
	• Acoustic performance	ISO: 10140-2:2010

CERTIFICATES

6.



WARRANTY

25 Year (Residential), 10 Year (Commercial) Warranty

Stamco Hoppings hereby certify that when fixed appropriately in accordance with the relevant design guidance SmartBoard shall be deemed under warranty for a period of twenty-five (25) years (residential use) and ten (10) years (commercial/public use) from the date of original purchase. SmartBoard products shall not split, splinter or suffer structural damage as a sole and direct consequence of termites, insects or soft rotting micro-fungi.

LIMITATIONS

For a period of ten (10) years from the date of original purchase, SmartBoard products shall not break. However this warranty explicitly excludes occurrences where the break occurs or may have occurred as a consequence of impact loads or poor design/construction methods.

This warranty applies to the use of products in normal residential use. Contact Stamco Hoppings Quality Timber Products on 01992 578877 or 01424 856856 if you require a warranty for a deck that is to be created in a commercial type situation.

WHAT'S NOT COVERED

This warranty does not provide protection against misuse, abuse, neglect or improper storage or handling. Stamco Hoppings cannot be held responsible for product failure due to improper installation or failure to abide by Stamco Hoppings fitting instructions. It also excludes the discolouration/staining of the products due to:

- Air borne pollutants, such as mould, algae, leaf litter and any deposits from plants and trees.
- Any other foreign substances.
- Variations in colour, texture or appearance from one board to another.
- Changes in colour associated with weathering effect of ultra violet light.

UNDERTAKING

The warranty is for the cost of re-supply, by Stamco Hoppings, of a component that is proven to have failed as a result of fungal decay or insect/termite attack, FREE OF CHARGE. It does not cover the costs of removal or reinstatement of such components or consequential costs or loss due to failure of the component. The term 'fungal decay' as used in the warranty refers to wood destroying fungi that feed on and degenerate the wood cell walls. It excludes staining and mould fungi associated with the weathering of wood. The term 'failed' refers to damage caused by fungi, insects or termites to such an extent that the component is no longer fit for purpose. In the event of a valid claim being resolved via the supply of a replacement board(s) the colour may be a slightly different.

STATUTORY RIGHTS

This warranty is in addition to the purchaser's normal statutory rights. The warranties are wholesaler/manufacturer to consumer/buyer warranties. However the initial raising of a complaint should be directed to the authorised retailer from where the goods were purchased. The complaint should be made in writing/e-mail and must include proof of purchase i.e. a copy or scan of the original invoice.

The term 'fungal decay' as used in the warranty refers to wood destroying fungi that feed on and degenerate the wood cell walls. It excludes staining and mould fungi associated with the weathering of wood. The term 'failed' refers to damage caused by fungi, insects or termites to such an extent that the component is no longer fit for purpose. In the event of a valid claim being resolved via the supply of a replacement board(s) the colour may be a slightly different.



Freephone helpline:

0800 849 6339

If you need help with installation or have any questions about SmartBoard products, simply call our friendly team.

